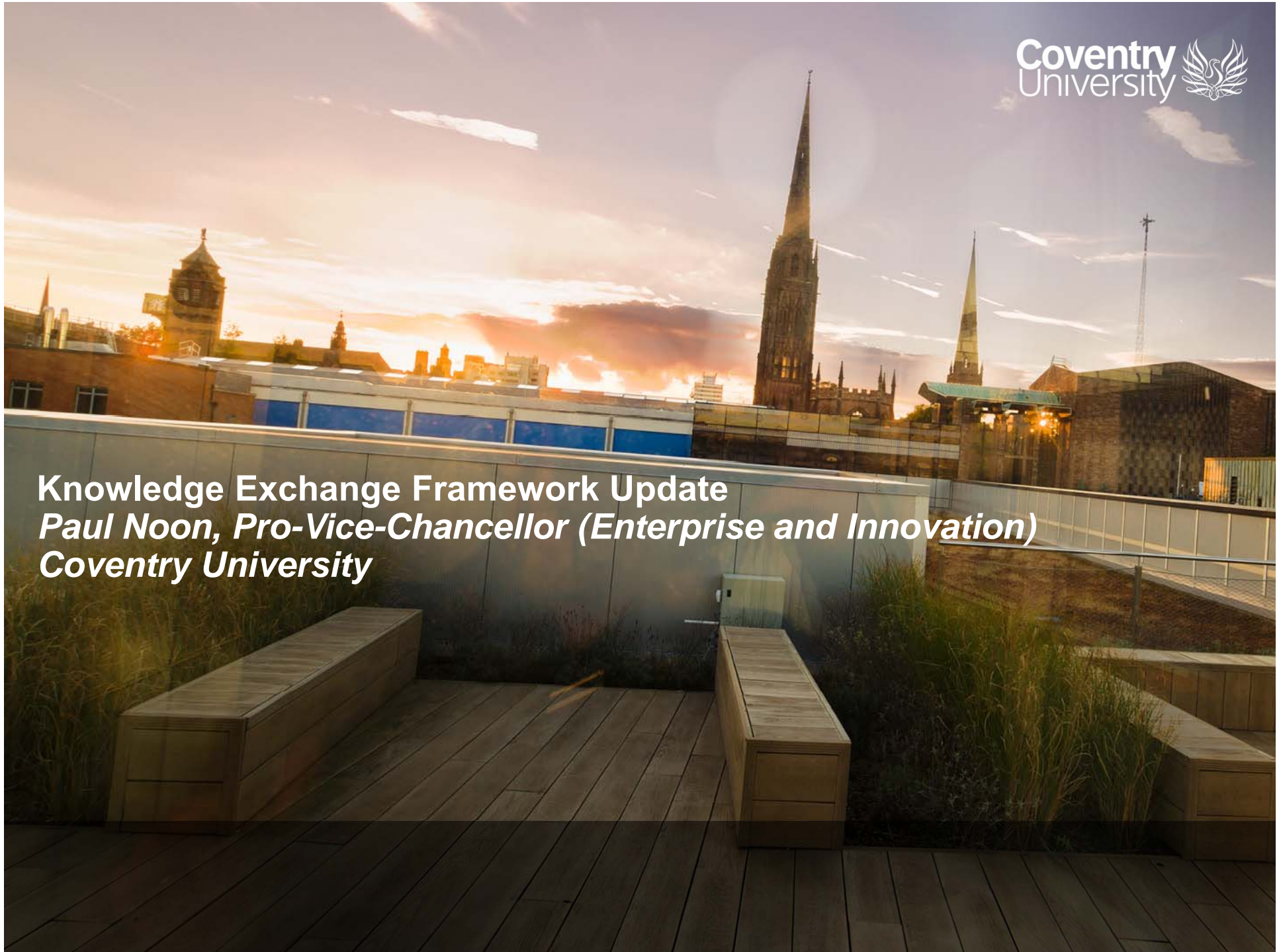


Knowledge Exchange Framework Update
Paul Noon, Pro-Vice-Chancellor (Enterprise and Innovation)
Coventry University



What is KEF?

New initiative under development by Research England (UKRI) to run alongside the Teaching Excellence Framework (TEF) and the Research Excellence Framework (REF) to measure knowledge exchange (KE) activities in English HEIs.

- To provide HEIs with a useful source of information and data on their knowledge exchange (KE) activities, for the purposes of understanding, benchmarking and improving their own performance.
- To provide businesses and other users (and potential users) of HEI knowledge with another source of information, which may increase visibility of potential university partners and their strengths, and contribute to their internal decision-making processes.

KEF Institution Clusters and Metrics

- Each HEI in England has been placed in a Cluster with other organisations which are deemed to be sector comparative for Knowledge Exchange by Research England
- Each HEI will be assessed across 7 perspective areas which Research England have deemed provide the full overview of Knowledge Exchange activity
- There are 21 pilot institutions in the KEF Pilot (ongoing to June 2019) and as Coventry is a pilot institution comparable data is available to Coventry, but only from these 21 institutions

KEF Clusters

- The KEF clusters were created through an academic exercise by the Centre for Science, Technology and Innovation Policy (CSTI) at the University of Cambridge
- Examining the key factors which effect Knowledge Exchange to create clusters of comparable institutions
 - Removing specialist institutions (in the Arts, STEM and business) this compares 99 HEIs across England
- Focusing on three core variable areas:-
 1. Scale and focus of the existing knowledge base
 - a) The size, and type, of academic and student population and subject focus areas
 2. Scale and focus of knowledge generation
 - a) The amount, scale, intensity and international nature of research income
 3. Scale and intensity of physical asset investment
 - a) The overall capital spend, and that spend per academic FTE on research assets

The KEF Clusters in summary

Cluster E	Cluster J	Cluster M	Cluster V	Cluster X
<p>Large universities</p> <p>Mid-level amount of world leading research</p> <p>Significant amount of research funded by gov't bodies/hospitals; 9.5% from industry.</p> <p>Small postgraduate population</p>	<p>Mid-sized universities</p> <p>Limited funded research activity</p> <p>Research activity funded largely by government bodies/hospitals; 13.7% from industry.</p>	<p>Small universities</p> <p>Much of research activity funded by gov't bodies/hospitals; 14.7% from industry.</p>	<p>Very large, very high research intensive universities</p> <p>Significant world-leading research.</p> <p>Research funded by range of sources incl. RCs, gov't bodies, charities and 10.2% from industry.</p> <p>Significant activity in clinical medicine</p> <p>Significant numbers of postgraduates.</p>	<p>Large, high research intensive and universities</p> <p>Significant amount of world-leading research.</p> <p>Much of research funded by RCs and gov't bodies; 8.5% from industry.</p> <p>Large proportion of taught postgraduates</p>
Coventry Nottingham Trent	Teeside Wolverhampton	Liverpool Hope Solent, Southampton	Warwick Cambridge	Leicester Hull

Measures

Research partnerships

Contribution to collaborative research

Co-authorship with non-academic partners

Skills, enterprise and entrepreneurship

CPD income

CPD learner days

Graduate start-ups

Working with business

Innovate UK income (KTP & grant)

Contract research income

Consultancy income

Local growth and regeneration

Regeneration and development income.

Working with the public and third sector

HE-BCI contract research income with public and third sector

HE-BCI Consultancy income with public & third sector

IP and commercialisation

Research resource (income) per-spin-out

Average external investment per spin-out

Licensing and other IP income

Public and community engagement

Time per academic FTE committed to public and community engagement, Events, Performances, Museums & galleries

**Ranked No.12
UK University**

Guardian University
Guide 2018

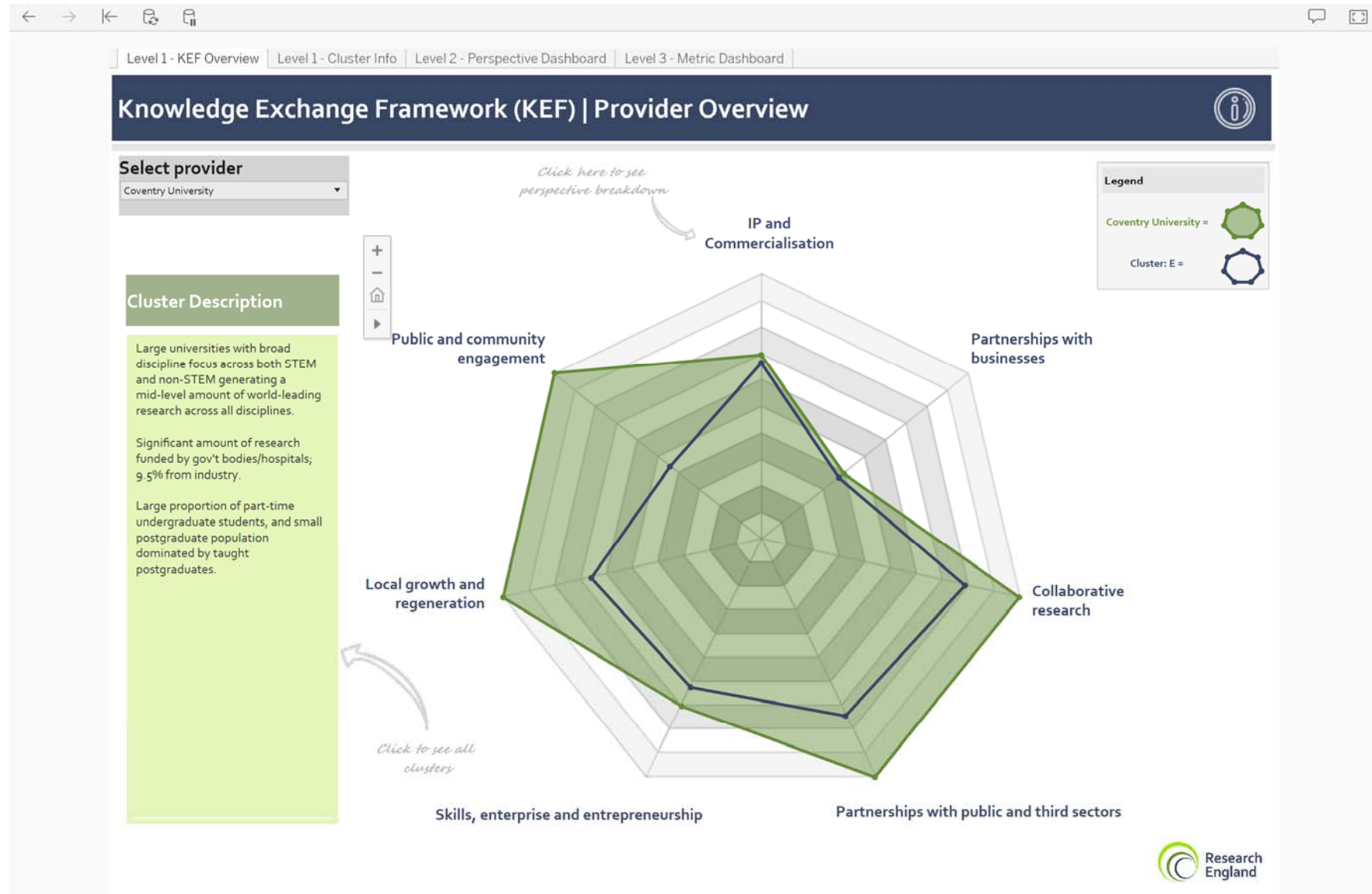
**2nd in UK for Teaching
Excellence (TEF)**

Times Higher Education metrics ranking
2017 - Gold winner

**Top 6 for Student
Experience**

The Times and Sunday Times
Good University Guide 2018

KEF Pilot data – Coventry (Cluster E)



Thank You

For more information see:

[Re.ukri.org/knowledge-exchange/knowledge-exchange-framework/](https://re.ukri.org/knowledge-exchange/knowledge-exchange-framework/)